

Redbrick Lakshmi



- > Close to Epicenter of IT Hub
- > 15 minutes to GST Road
- > 20 Minutes to Thoraipakkam
- > 20 Minutes to Sholinganallur
- > 15 Minutes to Velachery Train Station
- > 20 Minutes to International Airport
- > 10 Minutes to Medavakkam
- > 10 Minutes to Kamakshi Hospital
- > 10 Minutes to Good Schools
- > Well ventilated
- > Very good ground water
- > Clean Title
- > CMDA Approval

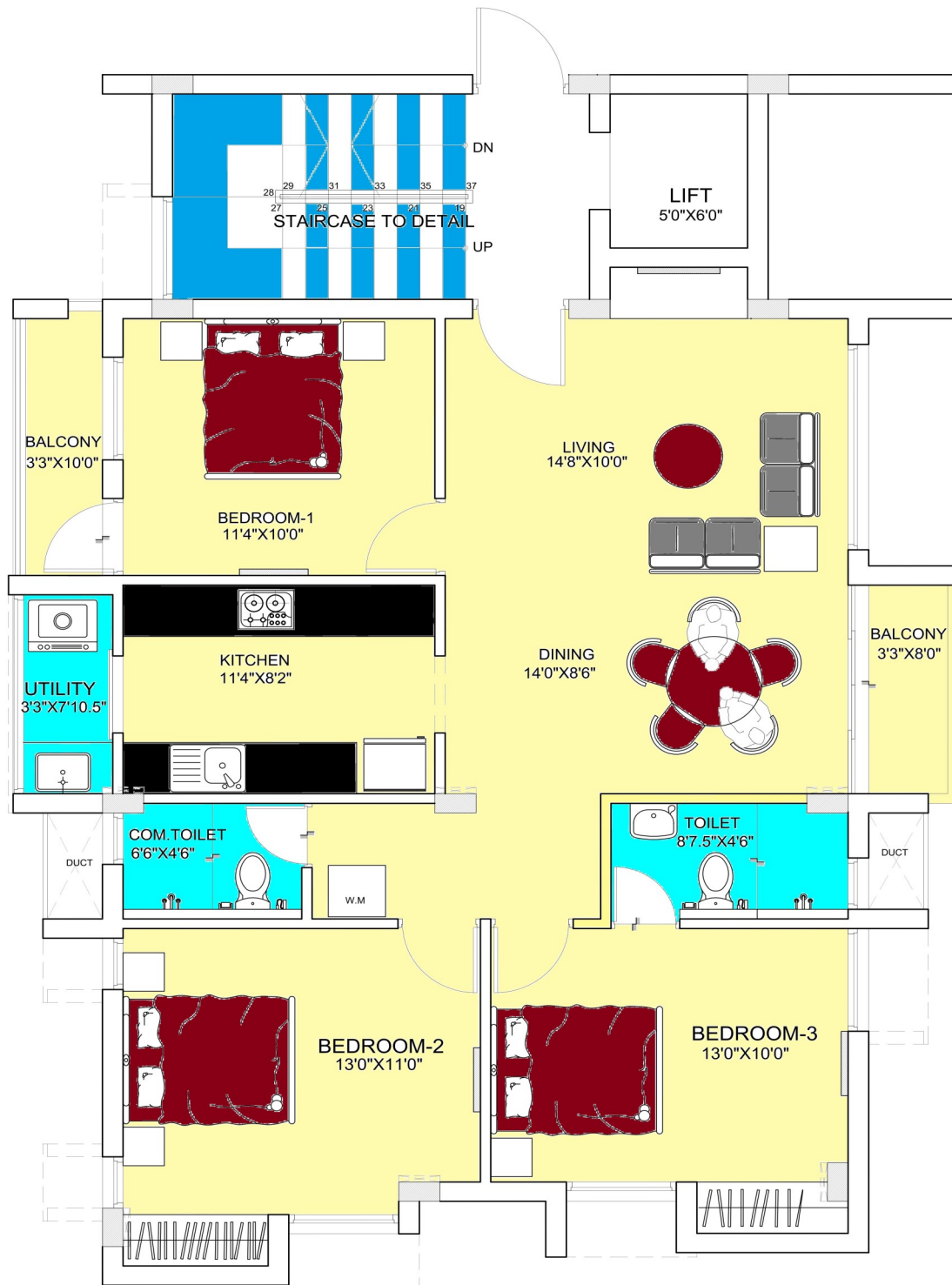


Location: 7 Kalaignar Salai, Suseela Nagar,
Kovilambakkam, Chennai 600117

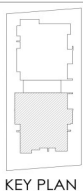
Expect more from us

LEVEL - 1,2,3

FLAT - A



PLOT-7



KEY PLAN

FLAT-A TYPICAL FLOOR PLAN
(1ST, 2ND & 3RD)

AREA:
FLAT-A = 1425 Sq.ft

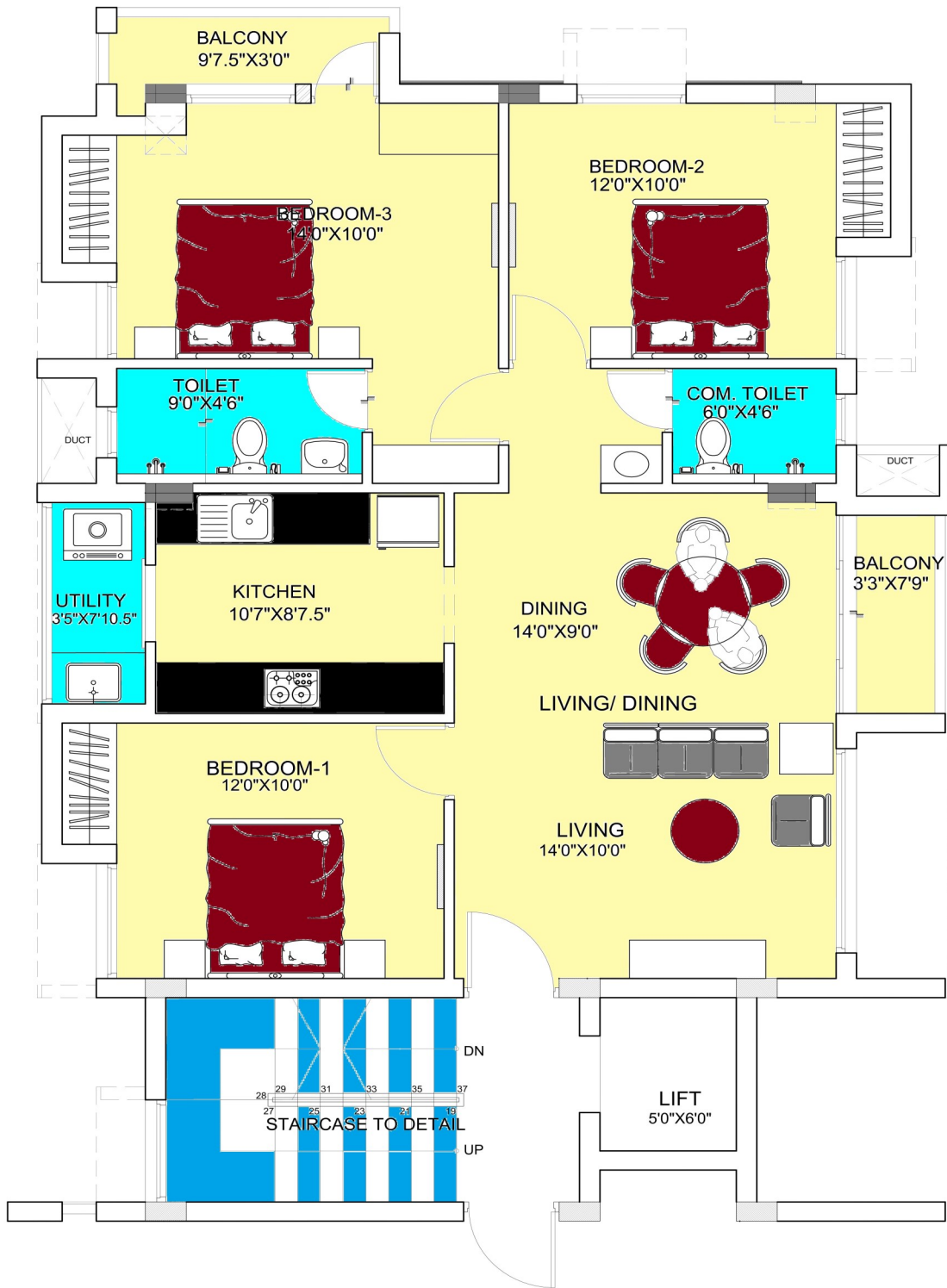


ARCHITECTS:
CHANDAR SEETHARAMAN
ARCHITECTS, PLANNERS AND INTERIOR DESIGNERS

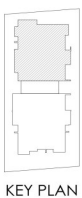


LEVEL - 1,2,3

FLAT - B



PLOT-7



**FLAT-B TYPICAL FLOOR PLAN
(1ST, 2ND & 3RD)**

AREA:
FLAT-B = 1420 Sq.ft



ARCHITECTS:
CHANDAR SEETHARAMAN
ARCHITECTS, PLANNERS AND INTERIOR DESIGNERS





CMDA Approved.

High Luxurious Apartment.

Availability 3 Bedrooms Apts.

Super Build up Area - Flat A 1425 sq.ft
Flat B 1420 sq.ft

Total No of Units - 6 Apts.

Number of Floors - Stilt + 3 Floors.

Project Completion Date - December 2023.

Specifications

Form: Stilt + 3 with lift

Structural: 5" Thick RCC Slab with strong foundation.

Super Structural: 9" Thick Outer Masonry Walls, weathering course with Mangalore Tiles at terrace

Flooring: Superior Quality vitrified tiles or similar flooring & skirting in living dining and bedrooms

Painting: Enamel paint for all doors, windows and grills. Putty finished emulsion paint for all inner and standard exterior emulsion for outer walls.

Joinery: Teak wood frames, Teak finish main flush door, all other doors enamel painted Flush doors. Windows with teak shutters and salwood frame or standard UPVC windows.

Bathrooms: Proper ceramic floor, with 5' ceramic tile dado for all bathrooms. Sanitary fixtures of a reputable make and chromium plated fittings of a reputable make, hot and cold mixtures with shower and provision for geyser, for all bathrooms

Kitchen: Superior ceramic tile flooring & 2' dado ceramic tile over granite kitchen platform with stainless steel sink.

Electrical: 3 phase power supply with concealed wiring and Anchor or equivalent switches. TV & Telephone point in living and bedrooms. Provision for AC in bedrooms. Provision for exhaust fan in kitchen and toilet.

Plumbing: Concealed pipeline for bath and kitchen. Duct for external pipeline. Over-head Tank with two storage compartments.

Lift: Four to six passenger lift

Vasudevan Ravi

vasudevanr@redbrickrealtor.com

Mobile: +91 95510 59991

Redbrick Realtor Pvt. Ltd.

**A2 #6 Dr B. Narasimhan Road
T. Nagar, Chennai 600017**

Landline: +914428152927

www.redbrickrealtor.com